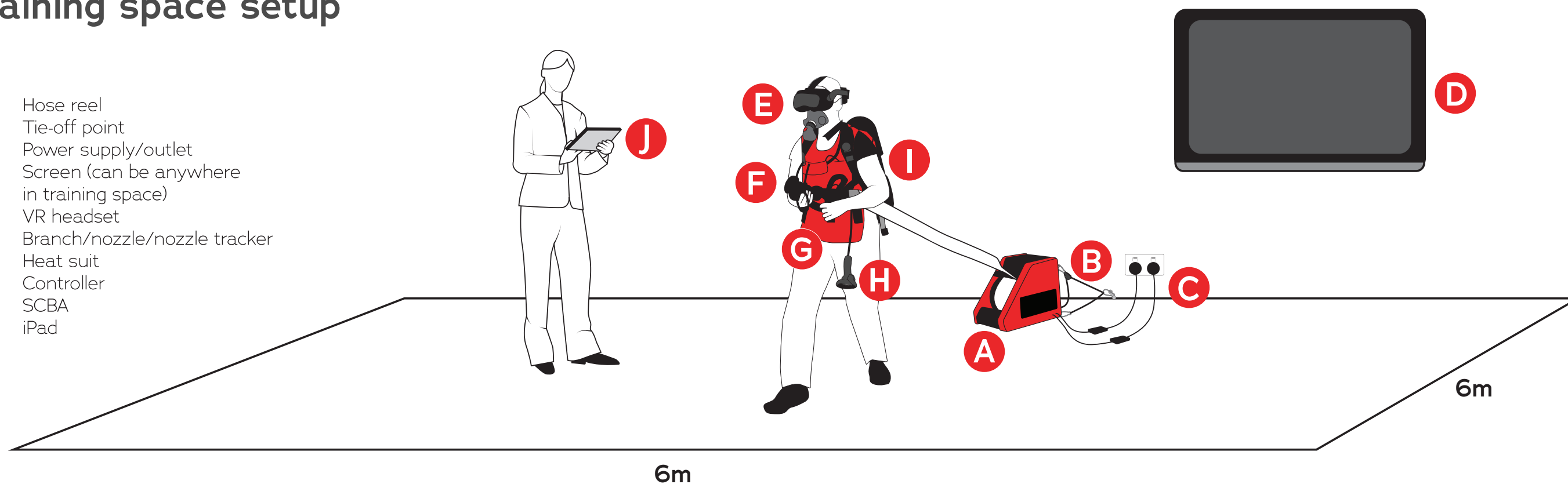


Congratulations on your purchase of the FLAIM T3 Trainer System.
To access support please visit <https://support.flaimsystems.com>

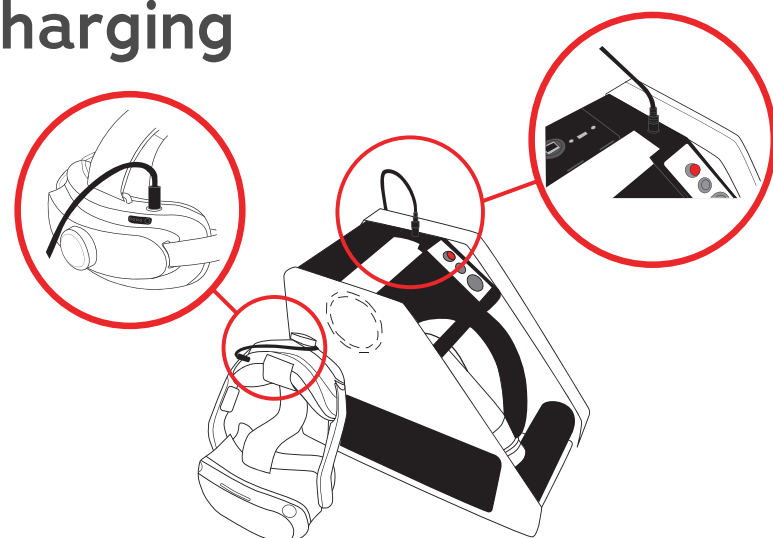
Training space setup

- A Hose reel
- B Tie-off point
- C Power supply/outlet
- D Screen (can be anywhere in training space)
- E VR headset
- F Branch/nozzle/nozzle tracker
- G Heat suit
- H Controller
- I SCBA
- J iPad

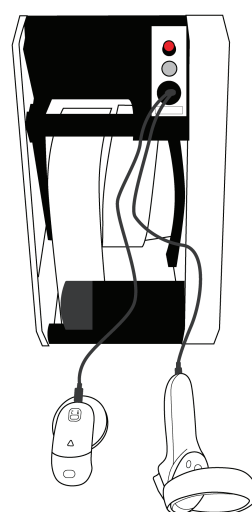


The workplace should not contain furniture, large mirrors or highly reflective surfaces. It should not be in direct sunlight.

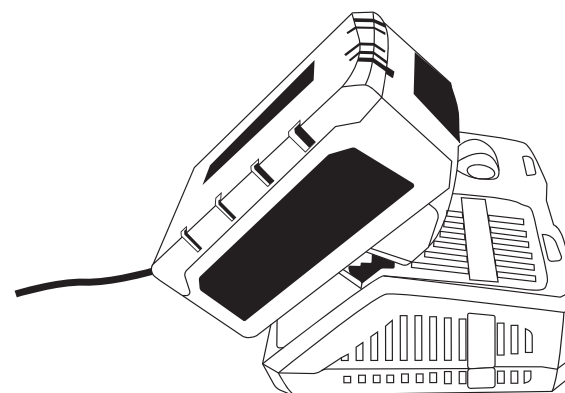
Charging



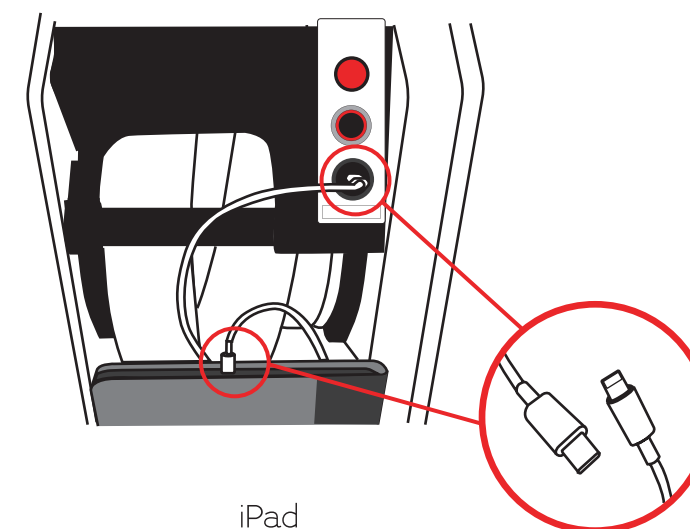
Headset



Controller + Tracker



SCBA Battery



iPad

1 Tie down the hose reel (2 options)

2 Connect both power supplies

3 Connect the HDMI cable to the hose reel

4 Set up the hose

5 Connect tracker to the end of the branch/ nozzle

6 Power up the unit

7 Turn on the iPad and launch the FLAIM trainer app

8 Check battery level and turn on the headset

9 Calibrate the headset by tilting your head towards the floor until the FLAIM software loads

10 Turn on the tracker and the controller

11 Insert battery into SCBA

12 Place heat suit next to SCBA

13 Connect face mask to SCBA

14 Optional: Connect the hose reel to Wi-Fi using the keyboard

15 You're ready to go!